



# VERSACE

CERAMICS

LA GRECA SIGNATURE

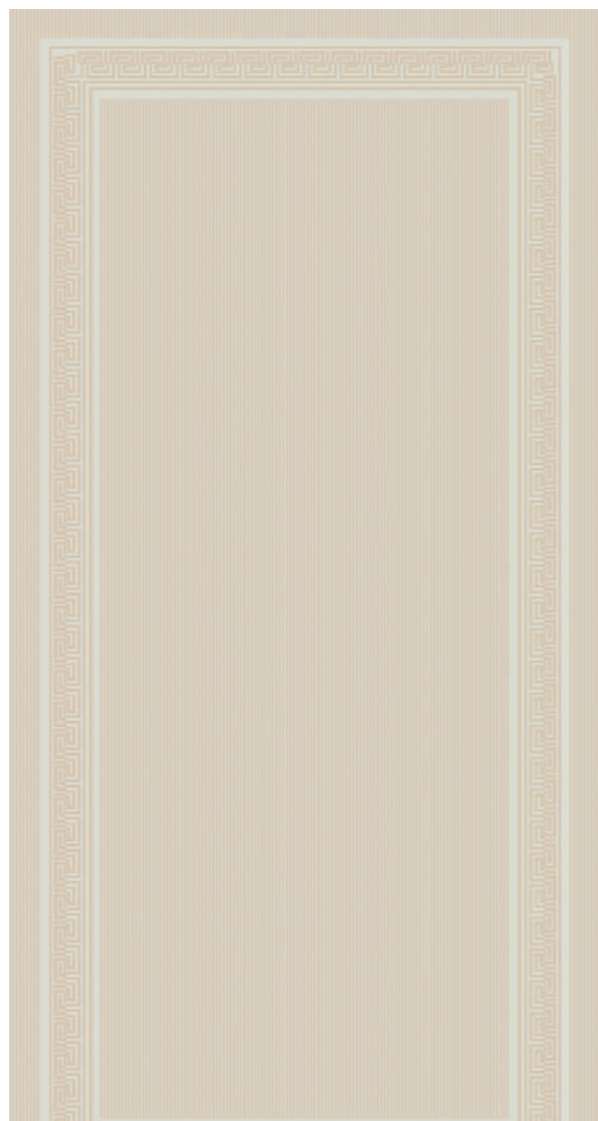
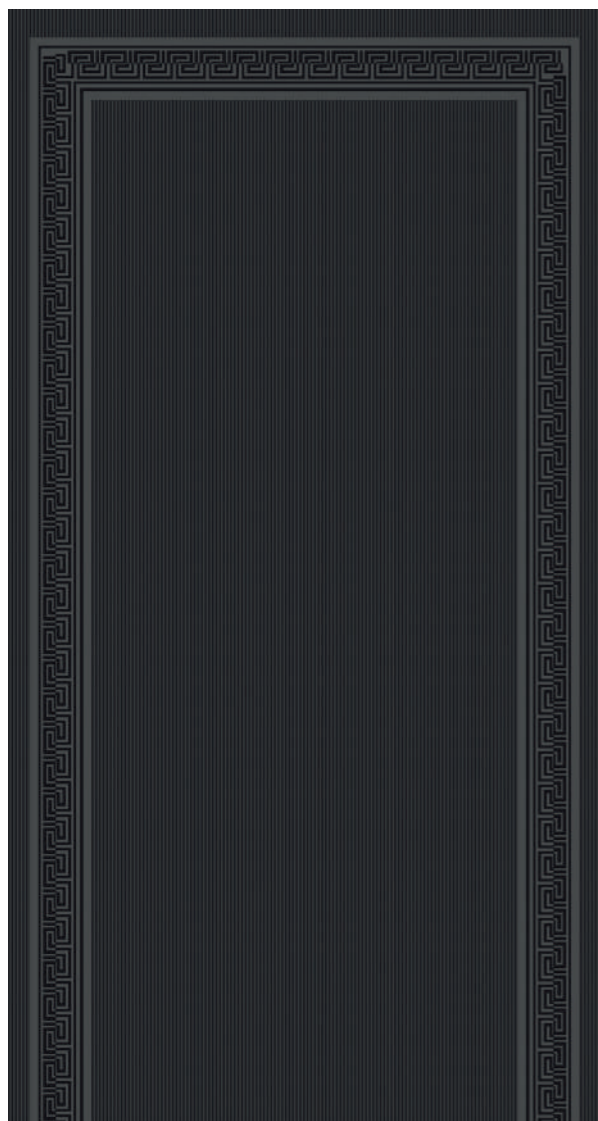
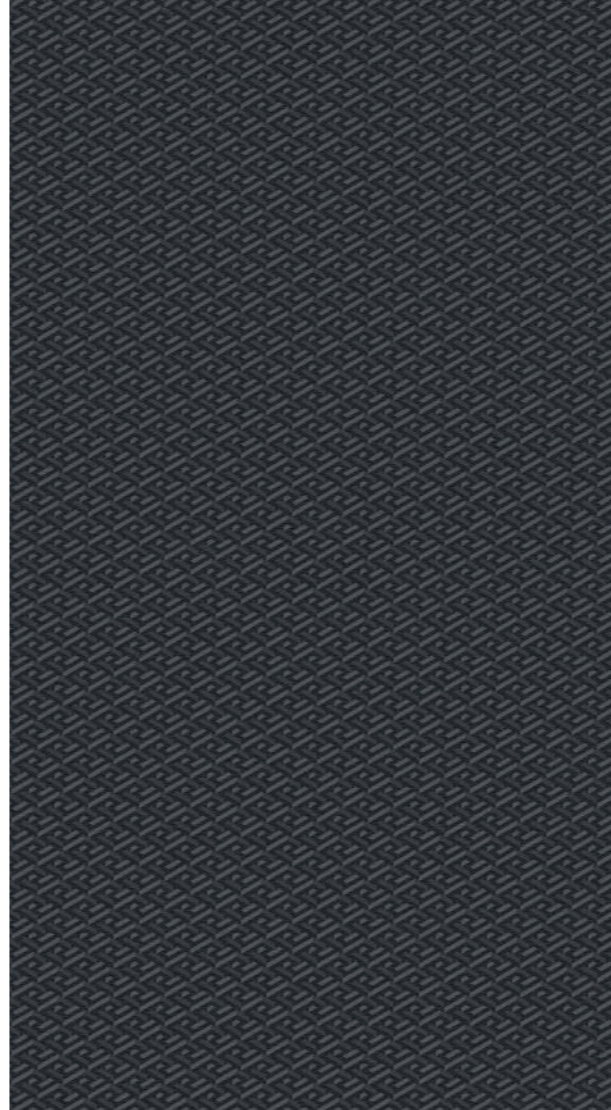
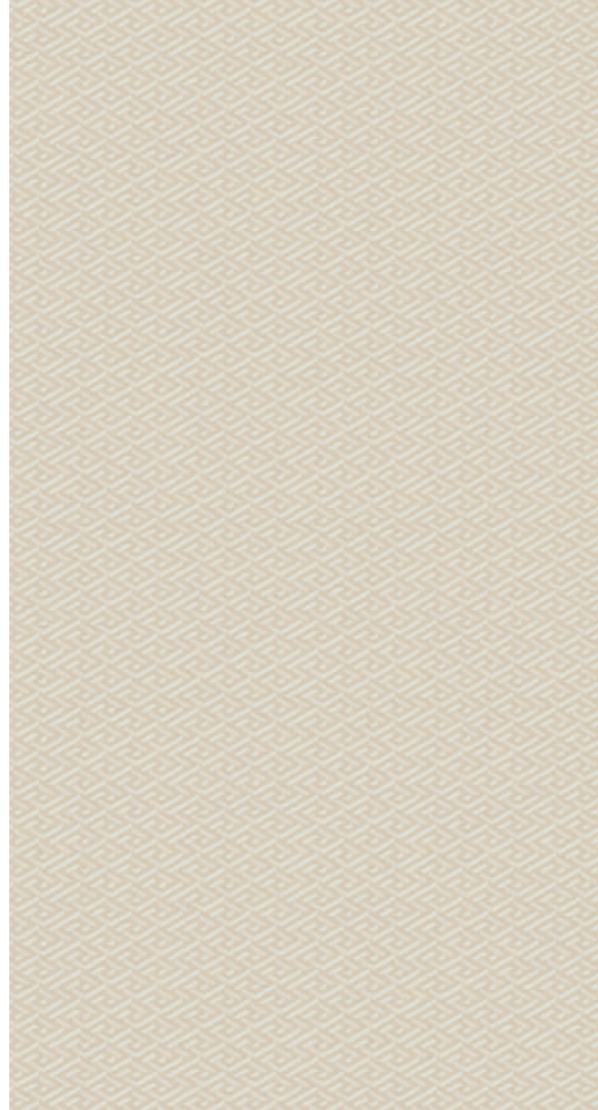
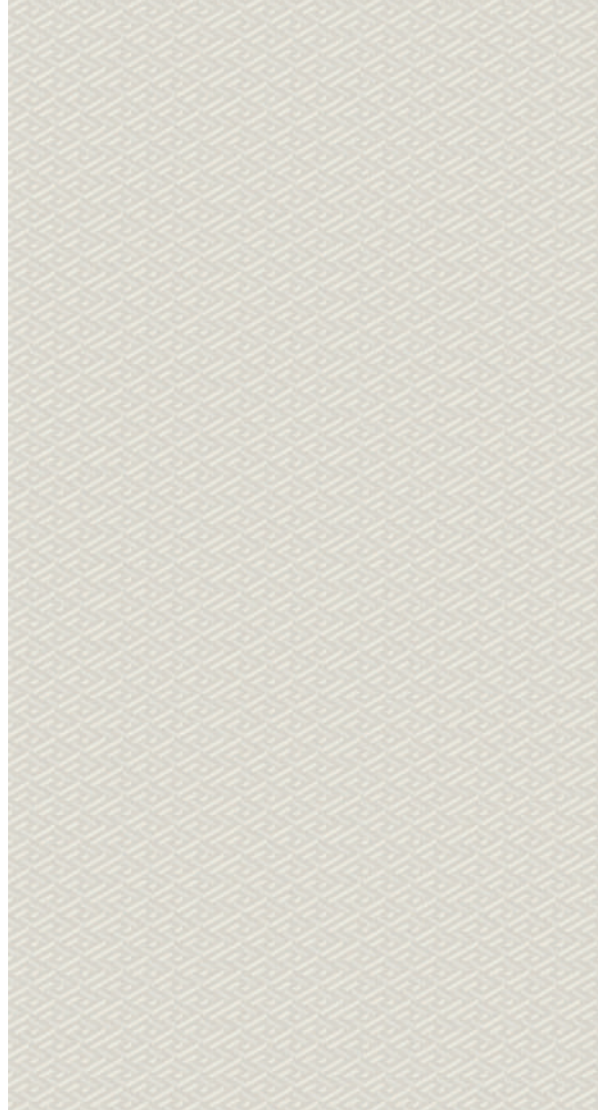
Le superfici  
**Versace Ceramics**  
sono pensate per  
trasferire il lusso e  
l'eleganza esclusiva del  
lifestyle Versace in tutti  
gli ambienti della casa,  
a partire dai pavimenti,  
passando per le zone  
living, fino alla sala  
da bagno.

In ogni contesto  
progettuale i soggetti  
iconici della maison  
diventano preziosi  
elementi decorativi,  
che insieme alle lastre  
ceramiche, trasformano  
gli spazi in ambienti  
sempre unici e speciali.

**The Versace Ceramics**  
surfaces have been  
designed to bring the  
luxury and exclusive  
elegance of the Versace  
lifestyle into every room in  
the home, from the living  
area to the bathroom,  
starting with the floors. In  
every setting, the iconic  
subjects of the maison  
have been transformed  
into beautiful décor  
elements, teaming with  
the ceramic tiles to bring  
a uniquely special allure  
to living spaces.

**VERSACE**  
CERAMICS





La **Greca Signature**, ispirata all'eleganza di un tessuto esclusivo, afferma in maniera immediatamente riconoscibile l'appartenenza allo stile Versace. L'esclusivo micro-pattern si trasforma in una raffinata superficie per spazi dal lusso minimal-chic, uscendo dal perimetro del bagno e osando con gli accostamenti cromatici, oltre che con innumerevoli soluzioni di posa.

Inspired by the elegance of an exclusive fabric, **La Greca Signature** is instantly recognisable as belonging to the iconic Versace style. The exclusive micro-pattern is transformed into an elegant surface ideal for luxurious, minimal-chic spaces. Suitable for applications that extend beyond the confines of the bathroom, it lends itself to bold colour combinations and countless installation layouts.





# BLACK

Wall  
Cut Black 20x60  
Insert Cream 11,5x20





**Floor**  
Black, White 60x60

**Wall**  
Black, White 20x60





**Floor**  
Black 20x120  
Black, White 20x20, 20x60

**Wall**  
Maximvs Panda Lux 160x320  
Maximvs Calacatta Bright Lux 120x280

**Furniture**  
Maximvs Calacatta Bright Lux





Floor  
Black 20x120  
Black, White 20x20, 20x60



# CREAM

Floor  
Cream 20x120







Floor  
Cream 20x120

Wall & Furniture  
Gemstone Cristallo Rosa Lux 120x280





**Floor**  
Chevron Cream 10x60

**Furniture**  
Maximvs Calacatta  
Bright Lux

**Wall**  
Boiserie Cream 60x120  
Fascia Logo Cream 10x60  
Battiscopa Cream 15x60  
Torello Cream 6x60





Floor  
Cut Cream 60x60  
Insert Black, Gold 11,5,x20





Floor  
Cut Cream 60x60  
Insert Black 11,5x20





# WHITE

**Floor**  
Chevron White 10x60

**Wall**  
Boiserie White 60x120  
Battiscopa White 15x60  
Torello White 6x60



Floor  
Chevron White 10x60



Floor  
Chevron White 10x60

Wall  
Boiserie-White 60x120  
Battiscopa White 15x60  
Torello White 6x60





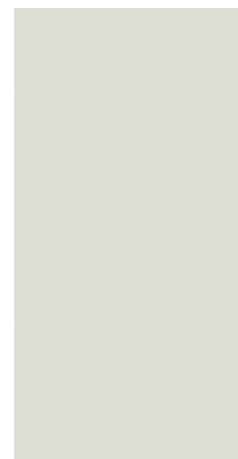
Floor  
Chevron White, Cream 10x60

Floor  
Chevron White, Cream 10x60

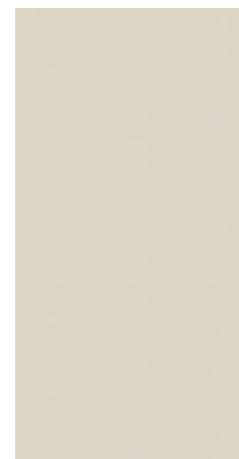




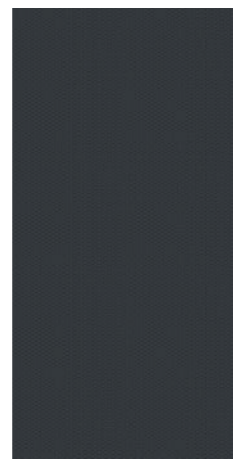
# LA GRECA SIGNATURE



G28301  
60x120 white



G28302  
60x120 cream



G28300  
60x120 black



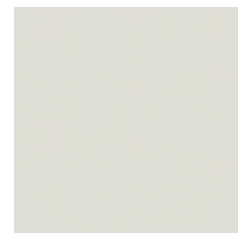
0014056  
20x120  
white



0014057  
20x120  
cream



0014058  
20x120  
black



0014053  
60x60 white



0014054  
60x60 cream



0014055  
60x60 black



0014059  
20x60  
white



0014060  
20x60  
cream



0014061  
20x60  
black



0016052  
20x20 white



0016053  
20x20 cream



0016054  
20x20 black

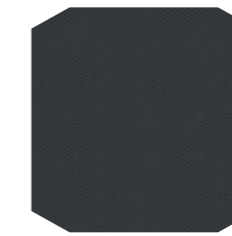
## Decors



0014070  
60x60 cut white



0014071  
60x60 cut cream



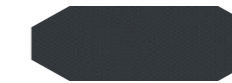
0014072  
60x60 cut black



0014073  
20x60 cut white



0014074  
20x60 cut cream



0014075  
20x60 cut black



0014749  
11,5x20 insert white



0014750  
11,5x20 insert cream



0014751  
11,5x20 insert black



0016524  
11,5x20 insert gold



# LA GRECA SIGNATURE

## Chevron



0014062  
10x60 chevron white



0014063  
10x60 chevron cream



0014064  
10x60 chevron black

## Decors



G0028381  
6x60 torello white



G0028382  
6x60 torello cream



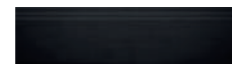
G0028380  
6x60 torello black



G0028391  
15x60 battiscopa white



G0028392  
15x60 battiscopa cream



G0028390  
15x60 battiscopa black

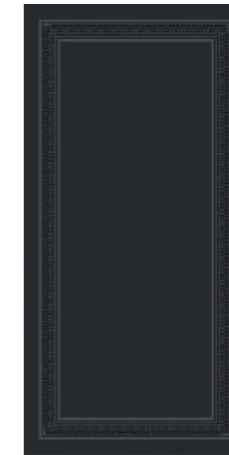
## Boiserie



0014139  
60x120 boiserie white



0014140  
60x120 boiserie cream



0014141  
60x120 boiserie black

### Stucchi consigliati Suggested grouts



Mapei White  
130 Jasmine



Mapei Cream  
137 Caraibi

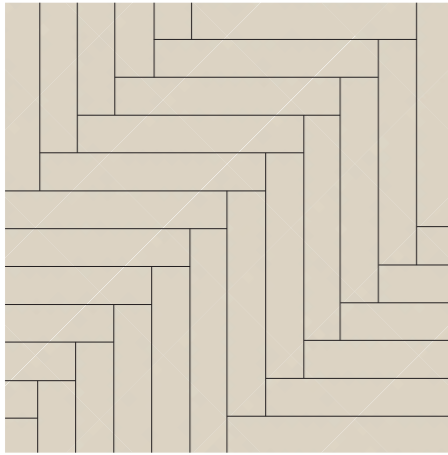


Mapei Black  
119 Grigio Londra

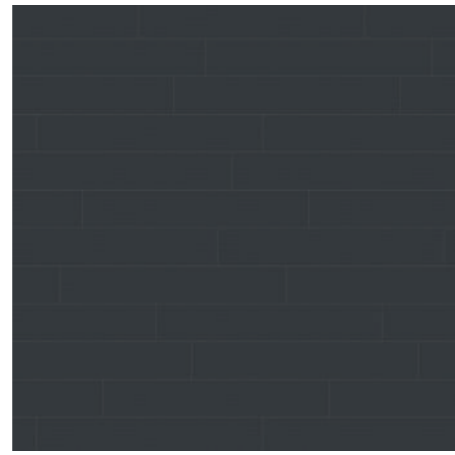


# LA GRECA SIGNATURE

## Laying schemes



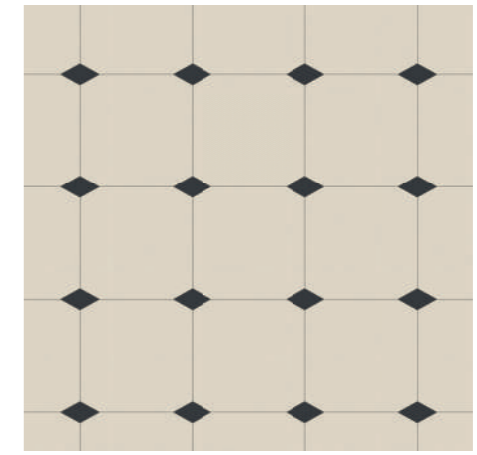
Listoni spina di pesce  
20x120 cm



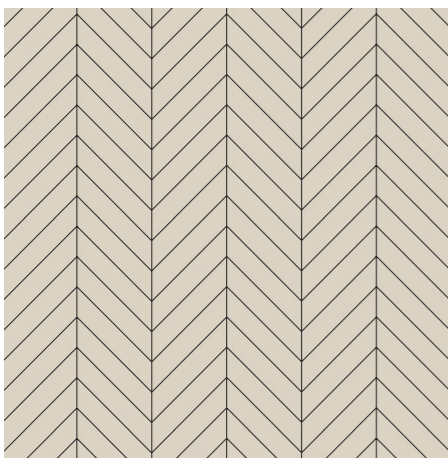
Listoni sfalsati  
20x120 cm



Muretto  
20x60 cm



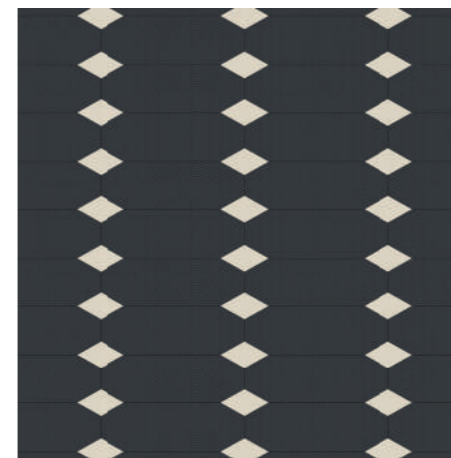
Cut 60x60 cm - 50%  
Insert 11,5x20 cm - 50%



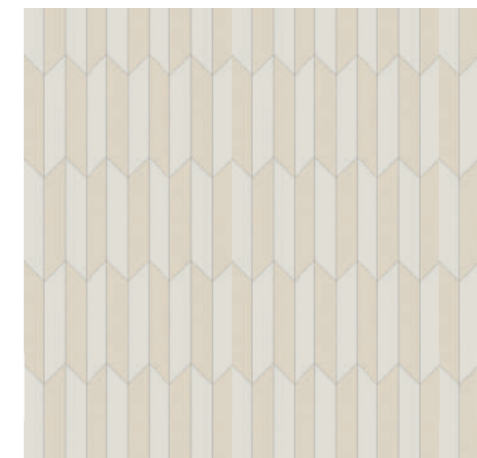
Chevron  
10x60 cm



Cassettone  
60x60 cm - 66%  
20x60 cm - 33%



Cut 20x60 cm - 50%  
Insert 11,5x20 cm - 50%



Chevron  
10x60 cm



# LA GRECA SIGNATURE

## Imballi Packing

Formato Size	Spessore Thickness	Pz/scat. Pcs/box	Mq/scat. Sqm/boxt	Kg/scat. Kg/box	Scat./Pal Box/pal	Mq/pal Sqm/pal	Kg/pal
Fondo 60x120	7	2	1,44	154,55	32	46,08	140,50
Fondo 60x120 Boiserie	7	2	1,44	226,05	32	46,08	205,50
Fondo 60x60	7	4	1,44	138,05	32	46,08	125,50
Fondo 20x120	7	6	1,44	154,55	32	46,08	140,50
Fondo 20x60	7	4	0,48	149,05	32	15,36	135,50
Chevron 10x60	7	12	0,72	204,05	32	23,04	185,50
Fondo 20x20	7	24	0,96	171,05	32	103,68	155,50
Insert 11,5x20	7	20	0,46	-	32	14,72	8,50
Fondo 60x60 cut	7	4	1,44	154,55	32	46,08	140,50
Fondo 20x60 cut	7	8	0,96	154,55	-	-	140,50

I dati relativi a imballaggi e pesi possono subire delle variazioni  
 Informations and details related to packaging and weight are subject to change

## Caratteristiche tecniche Technical characteristics

Le norme iso queste norme, elaborate dalla iso tc 189, sostituiscono, nei paesi che le hanno riconosciute, le precedenti vigenti.  
 The iso standards the standards, them processed by iso tc 189, replace the previous in force, in the countries that have recognized them.

Gres porcellanato  
 pressato a secco  
 Dry-pressed ceramic tiles,  
 fine porcelaine stoneware

Allegato Annex	Gruppo Group	Assorbimento d'acqua (E) Water absorption (E)
G	Bla	E ≤ 0,5%
H	Bib	0,5% < E ≤ 3%
I	Blla	3% < E ≤ 6%
J	Bllb	6% < E ≤ 10%
L	Blll	E > 10%

Superficie naturale: classificazione secondo norme UNI EN 14411 (ISO 13006) ALLEGATO G-Gruppo Bla GL  
 Natural surface: classification in accordance with UNI EN 14411 (ISO 13006) ANNEX G-Group Bla GL  
 Superficie 3Dtech: classificazione secondo norme UNI EN 14411 (ISO 13006) ALLEGATO G-Gruppo Bla GL  
 3Dtech surface: classification in accordance with UNI EN 14411 (ISO 13006) ANNEX G-Group Bla GL

Proprietà fisico-chimiche Chemical, physical and mechanical properties	Norme Standards	Valore prescritto dalle norme Value prescribed by the standards	Valori raggiunti Values achieved
Lunghezza e larghezza dimensione media di ogni piastrella Length and width of the average sizes tile	UNI EN ISO 10545/2	± 0,5%	Conforme According
Spessore Thickness		± 5%	Conforme According
Rettilinearità spigoli Warpages of edges		± 0,5%	Conforme According
Ortogonalità Rectangularity		± 0,6%	Conforme According
Planarità Flatness		± 0,5%	Conforme According
Assorbimento d'acqua Water absorption	UNI EN ISO 10545/3	E ≤ 0,5 %	Conforme According
Resistenza alla flessione Bending strength	UNI EN ISO 10545/4	≥ 35 N/mm <sup>2</sup>	Conforme According
Forza di rottura Breaking strenght		< 7,5 mm : ≥ 700 N	Conforme According
Resistenza all'abrasione superficiale per piastrelle gl Resistance to surface abrasion of glazed tiles	UNI EN ISO 10545/7	Test method available	Conforme According
Resistenza agli sbalzi termici Thermal shock resistance	UNI EN ISO 10545/9	Richiesta Required	Resiste Resists
Resistenza al gelo Frost resistance	UNI EN ISO 10545/12	Richiesta Required	Ingelivo Frost proof
Resistenza all'attacco chimico Chemical resistance	UNI EN ISO 10545/13	Min GB	Conforme According
Resistenza alle macchie Resistance to staining	UNI EN ISO 10545/14	Test method available	Conforme According
Resistenza allo scivolamento Slip resistance	B.C.R.A. C.A.	μ 0,19 scivolosità pericolosa dangerously slippery 0,20 < μ < 0,39 scivolosità eccessiva excessively slippery 0,40 < μ < 0,74 attrito soddisfacente satisfactory grip μ 0,75 attrito eccellente - excellent grip	> 0,40
	B.C.R.A. G.B.		> 0,40
	ASTM C 10 2 8 (S.C.O.F.)	Slip resistant (> 0,60)	> 0,60 DRY > 0,6 0 WET
	DIN EN 16 16 5 B	In funzione dell'ambiente o della zona di lavoro Basing on the environment or the working area	R10 (NAT)
	DIN EN 16 16 5 A	-	A+B (NAT)
ANSI A 13 7-1:2 0 12	≥ 0,42	> 0,42	



Le caratteristiche di superficie e le tonalità dei prodotti ceramici illustrati in questo catalogo sono da ritenersi puramente indicative.  
**Optical features and color shades of ceramic materials illustrated in this catalogue are to be regarded as mere indications.**

**"All marks created by GIANNI VERSACE S.r.l. Milano, Italy - Trade marks rights reserved to GIANNI VERSACE S.r.l. Milano and its successors in title".**

Nessuna iniziativa pubblicitaria potrà essere intrapresa se non previamente autorizzata volta per volta e per iscritto da GIANNI VERSACE S.r.l.  
**No advertising initiative can be undertaken without previous written authorization given each time by GIANNI VERSACE S.r.l.**

"La proprietà intellettuale del presente catalogo è riservata per tutti i Paesi. La traduzione, riproduzione, memorizzazione elettronica e l'adattamento totale o parziale e con qualsiasi mezzo (compresi microfilm e le copie fotostatiche) dei suoi contenuti comporta la violazione dei diritti di copyright di Ceramiche Gardenia Orchidea S.p.A. I prodotti raffigurati nelle immagini del presente catalogo sono protetti secondo la normativa vigente in materia di proprietà industriale".

**"All the intellectual property rights of this catalogue are reserved in all countries. Translation, reproduction in print or electronic form, and adaptation, in whole or in part, using any means (including microfilm and photocopy formats) of the contents of the said catalogue constitute a violation of Ceramiche Gardenia Orchidea S.p.A.'s copyright. The products featured in the photographs in this catalogue are protected by current industrial property legislation."**

"Il presente documento è da ritenersi strettamente confidenziale, pertanto è riservato alla sola rete vendita VersaceCeramics."  
**"This document is (to be considered) strictly confidential, therefore it is reserved for the Versace Ceramics sales network only."**

**VERSACE**  
CERAMICS

Via Canaletto, 27  
41042 Spezzano di Fiorano MO (Italy)  
Phone +39 0536 849611  
E-mail: [info@gardenia.it](mailto:info@gardenia.it)  
[gardenia.it](http://gardenia.it) | [versace-tiles.com](http://versace-tiles.com)

GVLGS-CATA

  
Ceramics of Italy





TORONTO  
115 Carnarvon Street  
Toronto, ON M6M 3C9  
T 416 413 9008  
F 416 413 9652

TROY  
1700 Stutz Drive, Ste 122  
xsTroy, MI 48084  
T 248 643 6520  
F 248 643 6523

Please note, all specifications have been supplied  
by the manufacturer and are subject to change.

Email: [mail@cercantile.com](mailto:mail@cercantile.com)

Website: [www.cercantile.com](http://www.cercantile.com)