



Tonino Lamborghini

100% DESIGN
AND PRODUCTION
OF ITALY





Tonino Lamborghini

LUXURY SURFACES

"Nel 1981 fondai l'azienda Tonino Lamborghini Style and Accessories. In quel periodo stavo coadiuvando mio padre nelle aziende di famiglia, ma sentivo il bisogno di fare qualcosa di esclusivamente mio, diverso dal mondo dei motori.

Da sempre ero appassionato di moda e accessori e per il design presi ispirazione dal mio background ingegneristico. Sono sempre stato attratto dai prodotti legati a un concetto meccanico, pertanto non per un caso il mio primo accessorio Tonino Lamborghini fu un orologio.

E ancora oggi in ogni mio prodotto non deve mancare un dettaglio in qualche modo correlato all'heritage meccanico e ingegneristico della mia famiglia. Spirito senza compromessi, design e italianità, uniti al leggendario retaggio di un mito senza tempo: questi i valori che caratterizzano il mio marchio. La mission dell'azienda Tonino Lamborghini è chiara: esportare la passione e lo spirito della cultura italiana attraverso prodotti dal design unico e distintivo, ispirato al design industriale italiano e alla storia della famiglia Lamborghini".

"In 1981, I started up my new Tonino Lamborghini Style and Accessories company. At the time I was assisting my father in the family group, but I felt the need to do something exclusively of my own, different from the world of engines.

I have always been interested in design and accessories and I took inspiration from my engineering background. I've always loved products linked to mechanics, thus it was obvious for me that the first accessory I designed was a watch.

And even today in every product I create there must not be missing a detail somehow related to the mechanical and engineering heritage of my family. Uncompromising spirit, Italian ingenuity and design - together with the timeless legend of a brand recognized throughout the globe: these are the values that characterize my brand.

The mission of my company is clear: to spread the passion and spirit of Italy with unique and distinctive products, inspired by Italian industrial design and the Lamborghini family's story".

Tonino Lamborghini



Tonino Lamborghini

Tonino Lamborghini, lifestyle experience brand di accessori e progetti real estate di lusso, e il Gruppo Italcer, hub del design nella ceramica Made in Italy e nell'arredo bagno alto di gamma, hanno siglato un accordo per la nuova collezione di pavimenti e rivestimenti a marchio Tonino Lamborghini Luxury Surfaces.

"La partnership con Italcer rappresenta un'ulteriore conferma del nostro impegno ad esportare nel mondo la passione e lo spirito del lifestyle italiano sotto forma di progetti unici e distintivi che uniscono l'eccellenza del design e della manifattura italiana. Inoltre, il know how e la tecnologia produttiva di La Fabbrica arricchiranno a livello sia qualitativo che estetico il progetto Tonino Lamborghini HOME, che comprende già linee di arredo, rubinetteria, accessori per la casa e gli uffici per un total living di lusso fortemente ispirato al nostro family heritage."

Tonino Lamborghini
Presidente di Tonino Lamborghini S.p.A.

Tonino Lamborghini, a luxury accessories and real estate projects lifestyle experience brand, and Italcer Group, a hub of Italian ceramic design and high-end bathroom furnishings, have signed an agreement for the new collection of floor and wall surfaces bearing the Tonino Lamborghini Luxury Surfaces trademark.

"The partnership with Italcer is a further confirmation of our commitment to exporting the passion and spirit of Italian lifestyle throughout the world, in the form of unique and distinctive projects that combine the excellence of Italian design and workmanship.

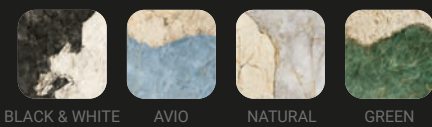
Furthermore, the know-how and production technology of La Fabbrica will enrich in qualitative and aesthetic terms the Tonino Lamborghini HOME project, which already includes furnishing, faucets and accessory collections for the home and office, for a luxury total living experience that is strongly inspired by our family heritage."

Tonino Lamborghini
Tonino Lamborghini S.p.A. President

MAGMA

MAGMA SERIES

6 mm Lap. Ret.



WALL FLOOR

MAGMA



120x280
48"x110"

p. 14

WALL

MAGMA LOGO



120x280
48"x110"

p. 32

WALL

MAGMA DECORS



120x280
48"x110"

p. 40

INDICE INDEX

MAGMA	14
MAGMA LOGO	32
MAGMA DECORS	40
PARTE TECNICA TECHNICAL SECTION	54

MAGMA

NEW SERIES 2023



Tonino Lamborghini



MAGMA

WALL FLOOR

MAGMA

MAGMA, la serie ispirata dalla forza che sprigiona la natura, alla sua bellezza intrinseca fatta di perfezione, di equilibrio ma altresì di selvatica indomabilità. Un effetto pietra lucente dall'aspetto unico e materico, caratterizzato da giochi di profondità e una gamma cromatica audace adatta ad ornare ambienti interni con carattere ed eleganza.

Avio, rievoca l'azzurro degli oceani; Green, un eco alla natura incontaminata; Natural, vera essenza della pietra Patagonia; e Black & White, i cui contrasti evidenziano i profili ed esaltano la morfologia del Quarzo e della roccia.

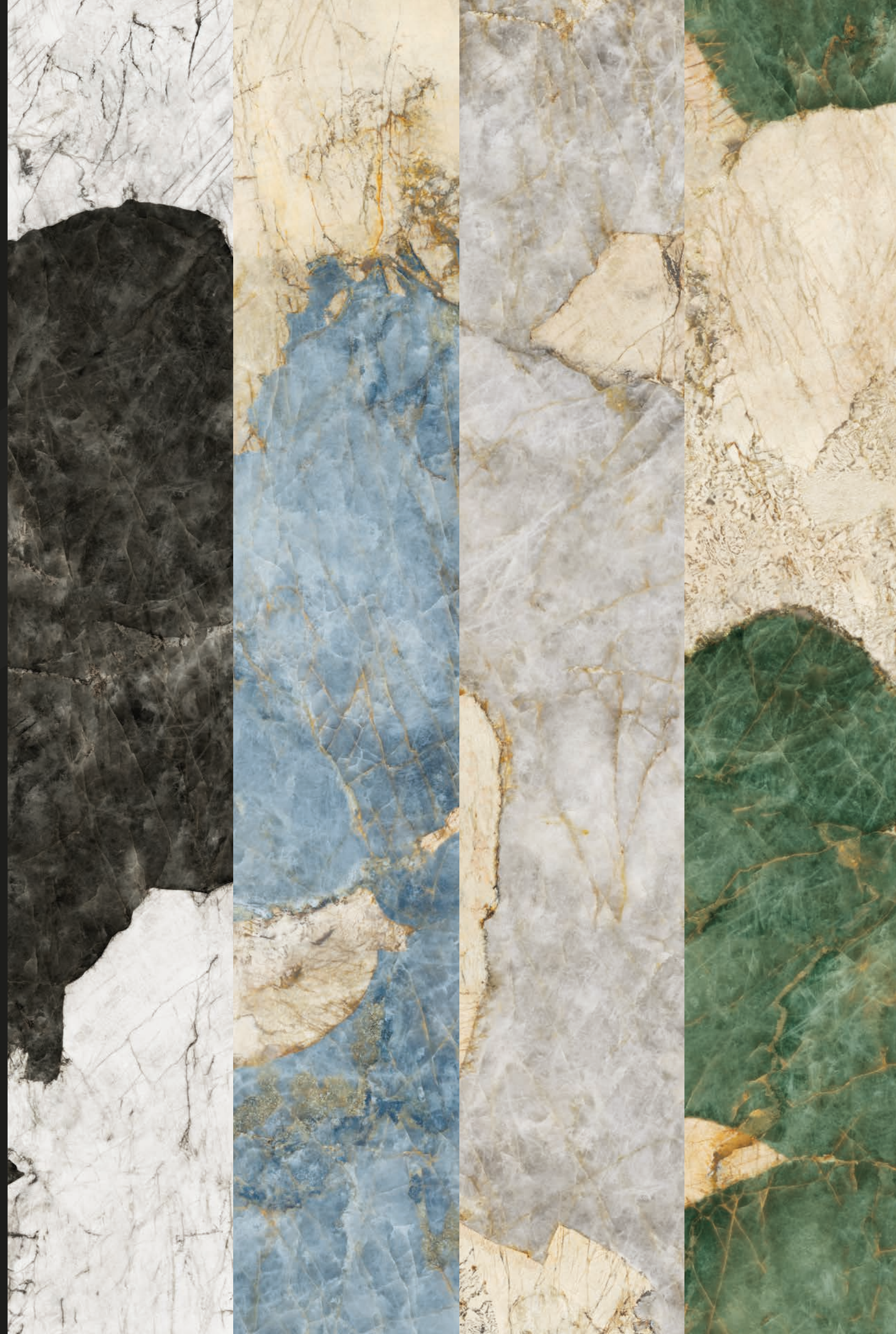
MAGMA, the series inspired by the force unleashed by nature, by its intrinsic beauty made of perfection, balance but also wild indomitability. A lustrous stone effect with a unique, textured appearance, characterised by different thicknesses and a bold colour range suitable for decorating interiors with character and elegance.

Avio evokes the blue of the oceans; Green echoes uncontaminated nature; Natural is the true essence of Patagonia stone; and Black & White, whose contrasts highlight the profiles and enhance the morphology of Quartz and rock.

6 mm



120x280
48"x110"
Lap. Ret.



BLACK & WHITE

120x280_48"x110" 6mm

Lap Ret



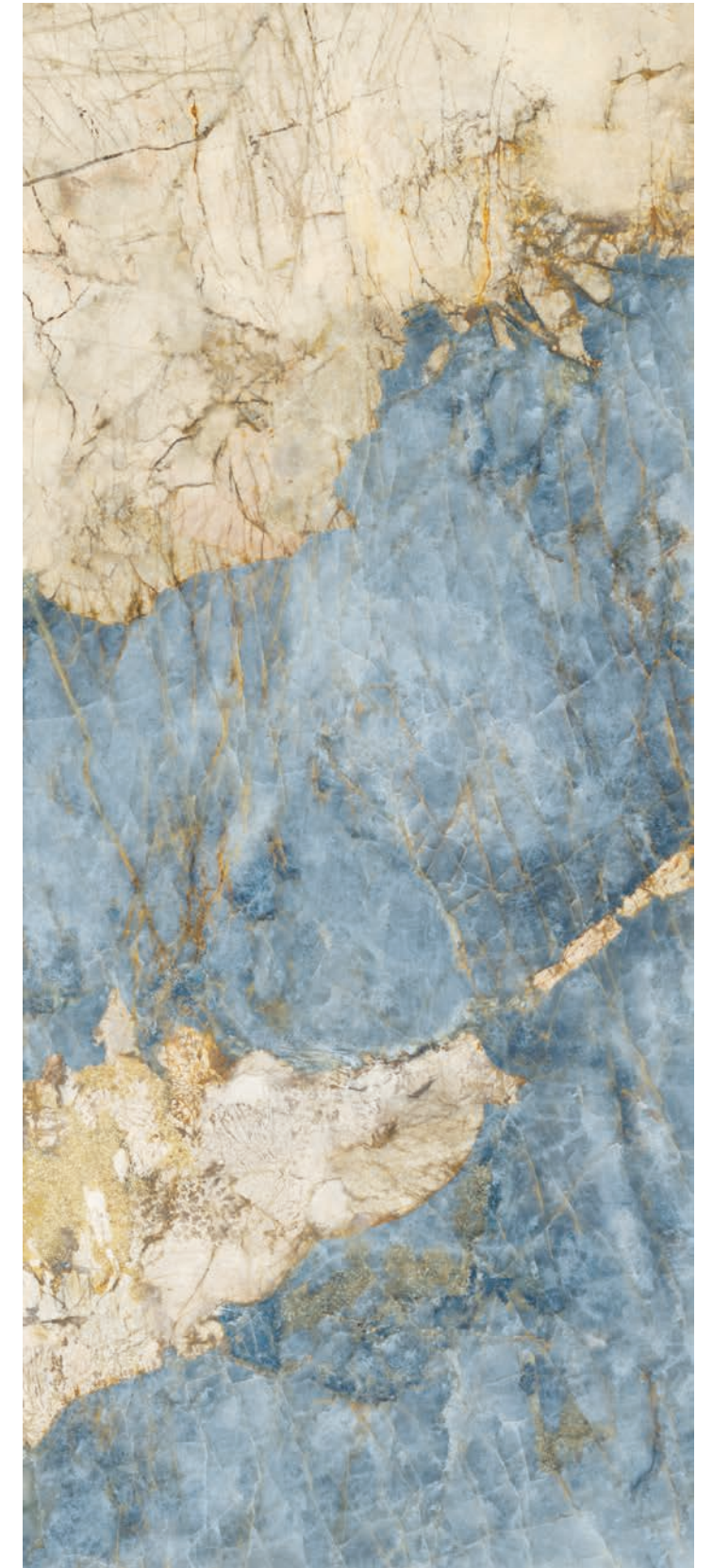
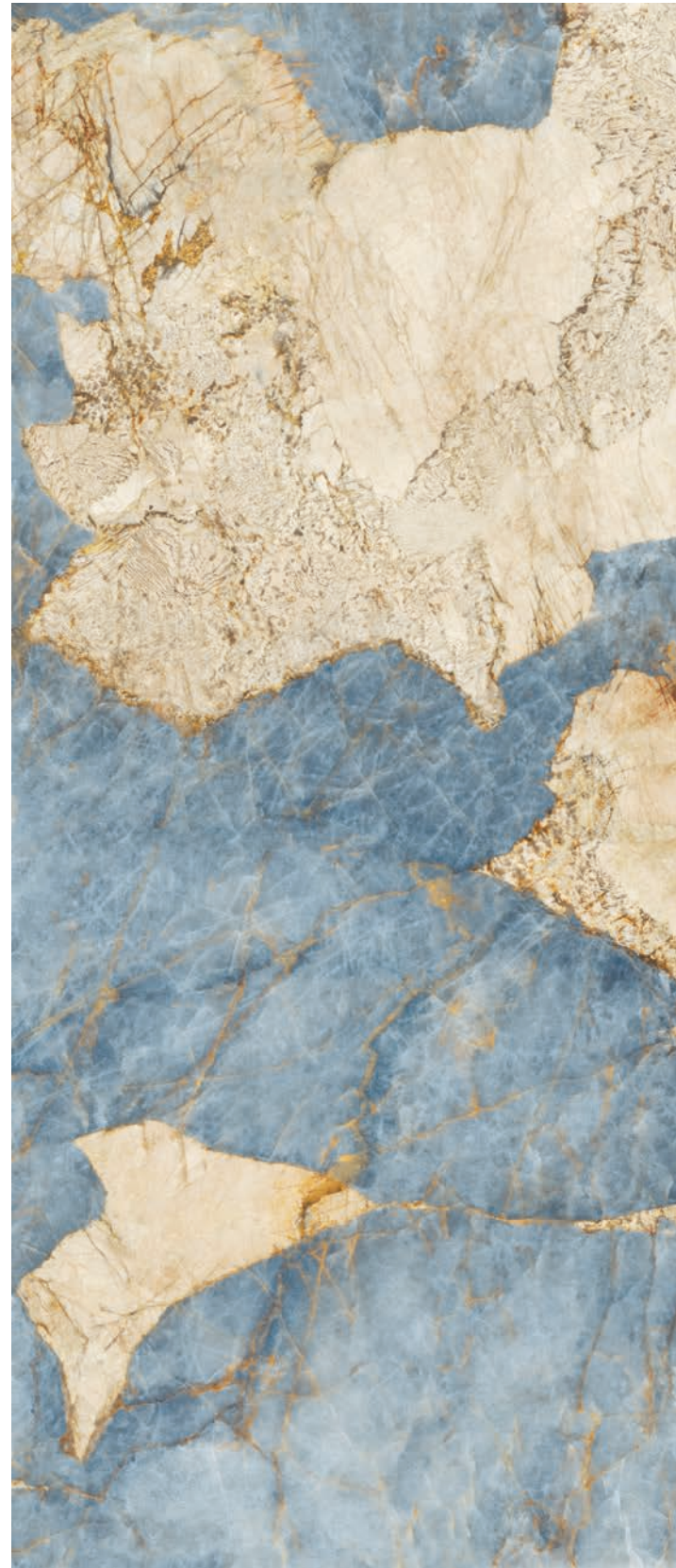
WALL
MAGMA BLACK & WHITE 120x280_48"x110" LAP RET



AVIO

120x280_48"x110" 6mm

Lap Ret





WALL and FLOOR
MAGMA AVIO 120x280_48"x110" LAP RET

NATURAL

120x280_48"x110" 6mm

Lap Ret





WALL and FLOOR
MAGMA NATURAL 120x280_48"x110" LAP RET

GREEN

120x280_48"x110" 6mm

Lap Ret



WALL and COUNTERTOP
MAGMA GREEN 120x280_48"x110" LAP RET



MAGMA

WALL

MAGMA LOGO

Tonino Lamborghini firma le sue opere, sottolineando la qualità e il design delle lastre, espressione del Made in Italy.

MAGMA LOGO propone in quattro versioni il marchio Tonino Lamborghini lungo i margini della lastra, il cui disegno caratterizzante conferisce un aspetto distintivo e deciso alla serie.

Tonino Lamborghini signs his works, emphasising the quality and design of the slabs, an expression of Made in Italy quality and craftsmanship.

MAGMA LOGO features four versions of the Tonino Lamborghini logo along the edges of the slab. Its distinctive design gives the series an exclusive, bold appearance.



LOGO

LOGO A

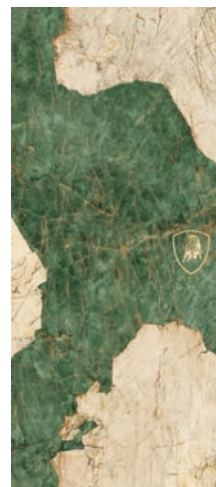
120x280
48"x110"



AVIO



NATURAL



GREEN

BLACK
& WHITE



LOGO B

120x280
48"x110"



BLACK & WHITE



NATURAL



GREEN

AVIO

LOGO C

120x280
48"x110"



BLACK & WHITE



AVIO



GREEN

NATURAL



LOGO D

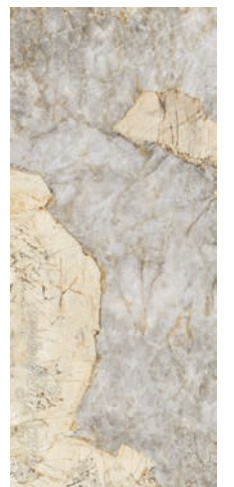
120x280
48"x110"



BLACK & WHITE



AVIO



NATURAL

GREEN





WALL
MAGMA LOGO A BLACK & WHITE 120x280_48"x110" LAP RET

FLOOR
BLACK & WHITE 120x280_48"x110" LAP RET



WALL
MAGMA LOGO D GREEN 120x280_48"x110" LAP RET

WALL

MAGMA DECORS

La serie **MAGMA DECORS** è concepito come un'opera d'arte. Se Magma e Magma Logo rivelano la bellezza celata della materia, Magma Decors fa di quest'ultima la sua tela.

Pennellate d'oro disegnano forme geometriche ed esotiche e trasportano lo spettatore all'interno di storiche dimore italiane ricche di meravigliosi affreschi e magici giardini annessi.

Venezia con la sua trama fonde il classico col moderno, Esotico è una finestra sulla natura selvaggia e infine Monogramma, un intreccio infinito brillante e sofisticato.

The **MAGMA DECORS** series is conceived as a work of art. While Magma and Magma Logo reveal the beauty concealed by the material, Magma Decors makes the latter its canvas.

Brushstrokes of gold draw geometric and exotic shapes and transport the viewer into historic Italian mansions full of beautiful frescoes and magical adjoining gardens.

Venezia, with its weft, blends the classical with the modern, Esotico is a window overlooking the wilderness and finally Monogramma, an endless shiny, sophisticated weave.

6 mm



120x280
48"x110"
Lap. Ref.





WALL
MAGMA BLACK 6 WHITE ESOTICO 120x280_48"x110" LAP RET

VENEZIA

VENEZIA

120x280
48"x110"

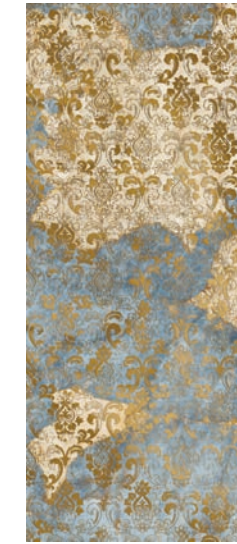
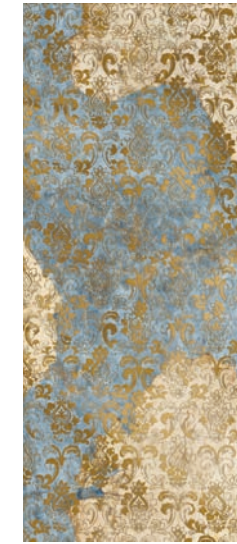


BLACK
& WHITE



ALTRI COLORI Other colours

AVIO



NATURAL



GREEN



VENEZIA



WALL
MAGMA BLACK & WHITE VENEZIA 120x280_48"x110" LAP RET



WALL
MAGMA GREEN ESOTICO 120x280_48"x110" LAP RET

FLOOR
MAGMA GREEN 120x280_48"x110" LAP RET

ESOTICO

ESOTICO

120x280
48"x110"



GREEN



ALTRI COLORI Other colours

BLACK & WHITE



AVIO



NATURAL

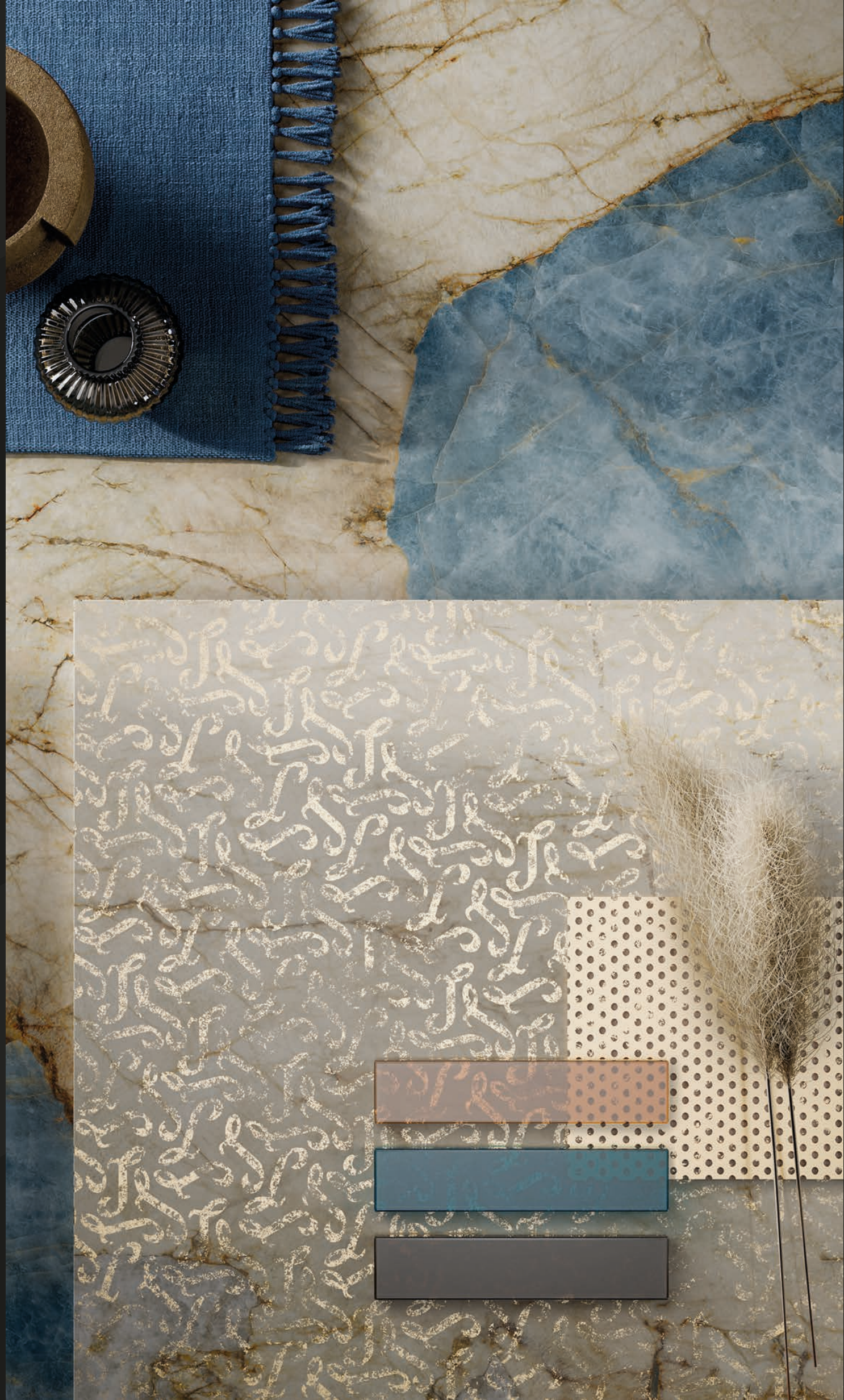


ESOTICO

WALL and BAR COUNTER
MAGMA GREEN ESOTICO 120x280_48"x110"

FLOOR
MAGMA GREEN 120x280_48"x110"





WALL and BAR COUNTER
MAGMA NATURAL MONOGRAMMA 120x280_48"x110" LAP RET

COUNTER TOP and BACKSPLASH
MAGMA NATURAL 120X280_48"X110"

MONOGRAMMA

MONOGRAMMA

120x280
48"x110"

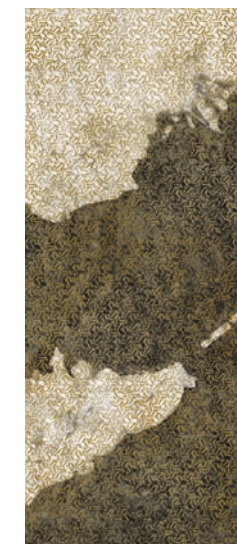
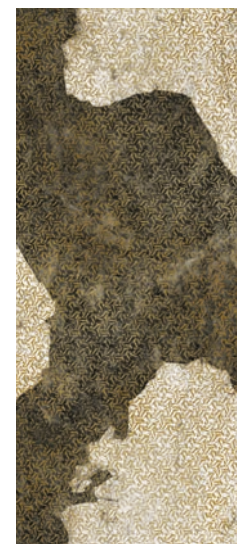


NATURAL

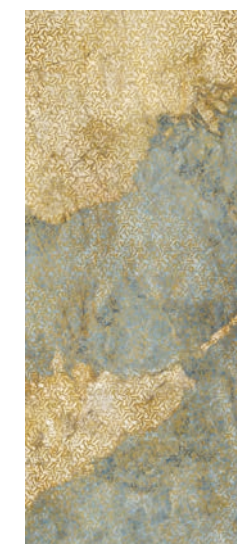
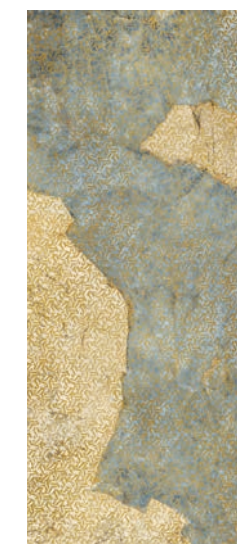
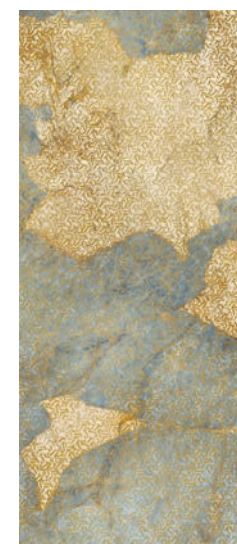
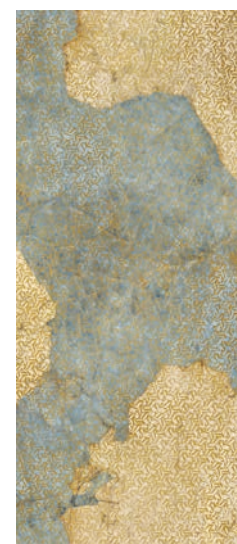


ALTRI COLORI Other colours

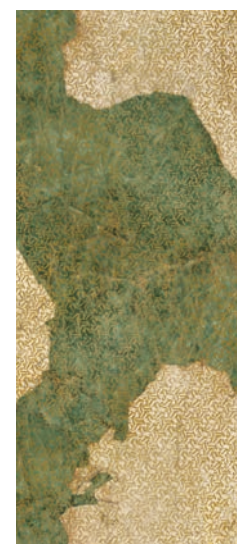
BLACK & WHITE



AVIO



GREEN



MONOGRAMMA



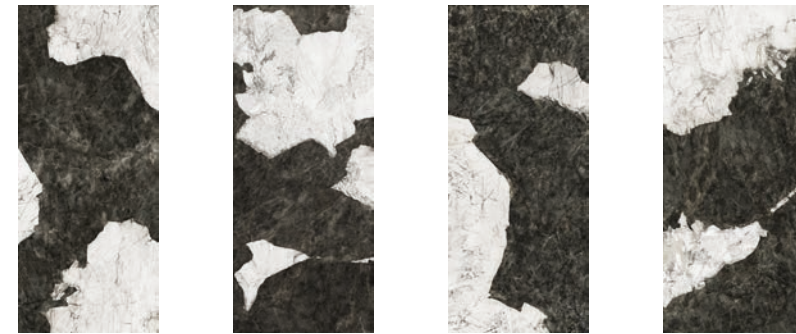
WALL and BAR COUNTER
MAGMA NATURAL MONOGRAMMA 120X280_48"X110"

COUNTER TOP and BACKSPLASH
MAGMA NATURAL 120X280_48"X110"

LASTRE IN GRES PORCELLANATO PRESSATE A SECCO - DRY-PRESSED PORCELAIN STONEWARE SLABS
UNI EN 14411-ISO 13006 - APPENDICE G - GRUPPO BIa - UGL

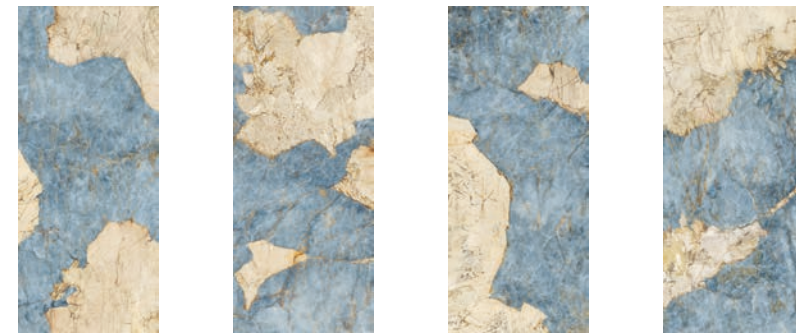
WALL FLOOR

BLACK & WHITE



189004
120x280 . 48"x110" Lap Ret

AVIO



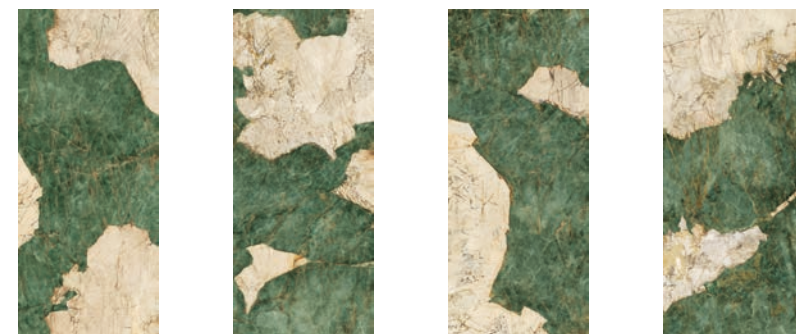
189003
120x280 . 48"x110" Lap Ret

NATURAL



189001
120x280 . 48"x110" Lap Ret

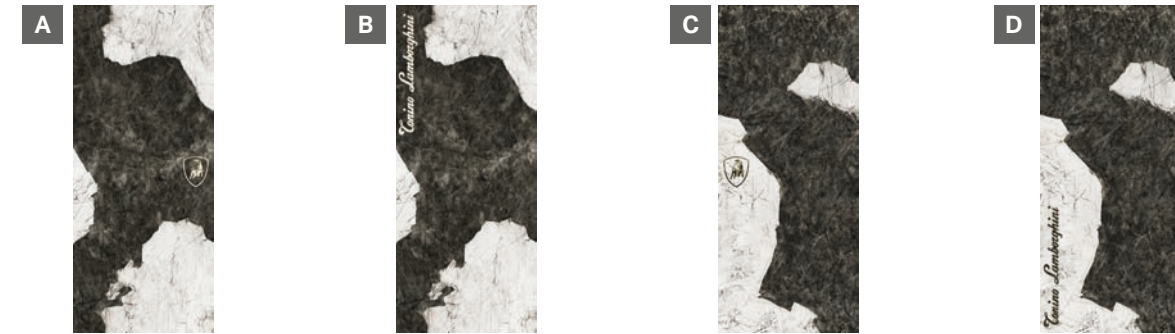
GREEN



189002
120x280 . 48"x110" Lap Ret

WALL

BLACK & WHITE LOGO



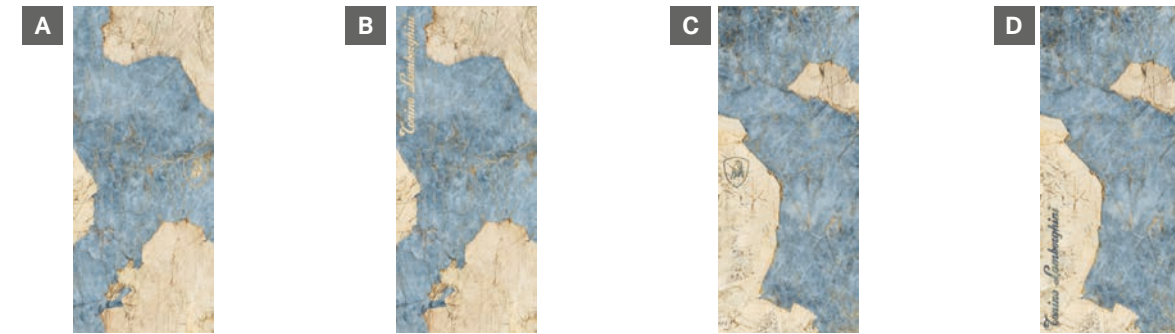
189017
120x280 . 48"x110" Lap Ret

189018
120x280 . 48"x110" Lap Ret

189019
120x280 . 48"x110" Lap Ret

189020
120x280 . 48"x110" Lap Ret

AVIO LOGO



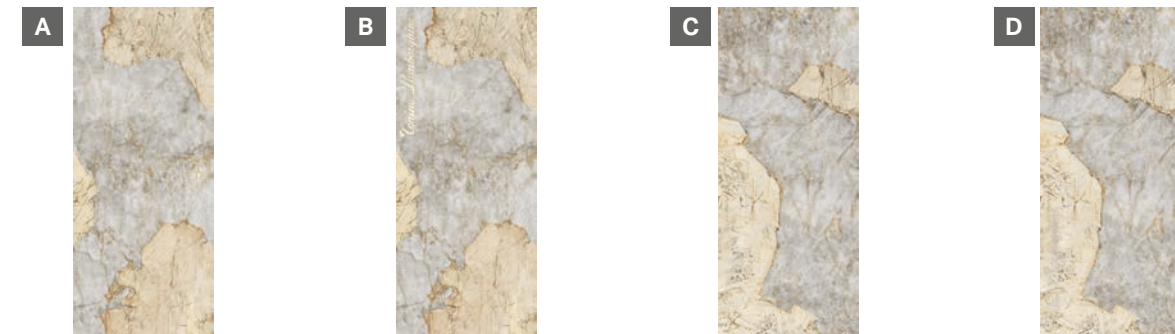
189013
120x280 . 48"x110" Lap Ret

189014
120x280 . 48"x110" Lap Ret

189015
120x280 . 48"x110" Lap Ret

189016
120x280 . 48"x110" Lap Ret

NATURAL LOGO



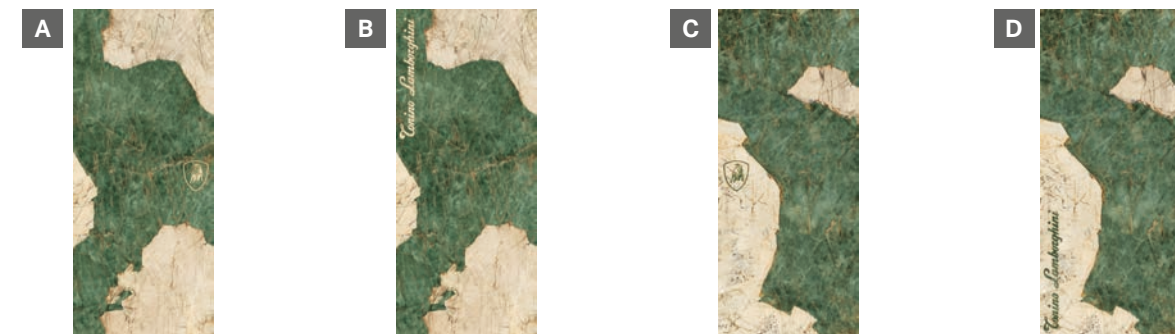
189005
120x280 . 48"x110" Lap Ret

189006
120x280 . 48"x110" Lap Ret

189007
120x280 . 48"x110" Lap Ret

189008
120x280 . 48"x110" Lap Ret

GREEN LOGO



189009
120x280 . 48"x110" Lap Ret

189010
120x280 . 48"x110" Lap Ret

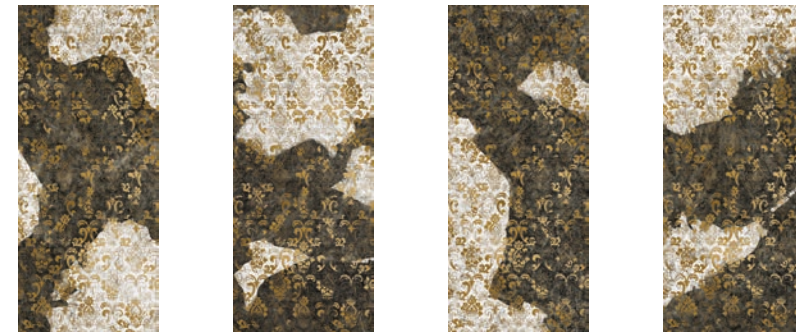
189011
120x280 . 48"x110" Lap Ret

189012
120x280 . 48"x110" Lap Ret

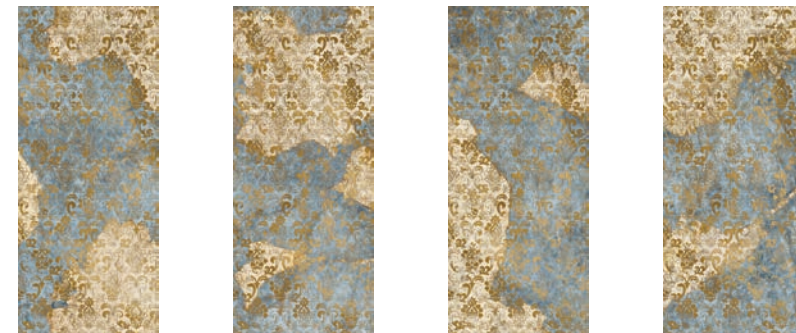
LASTRE IN GRES PORCELLANATO PRESSATE A SECCO - DRY-PRESSED PORCELAIN STONEWARE SLABS
UNI EN 14411-ISO 13006 - APPENDICE G - GRUPPO BIa - UGL

WALL

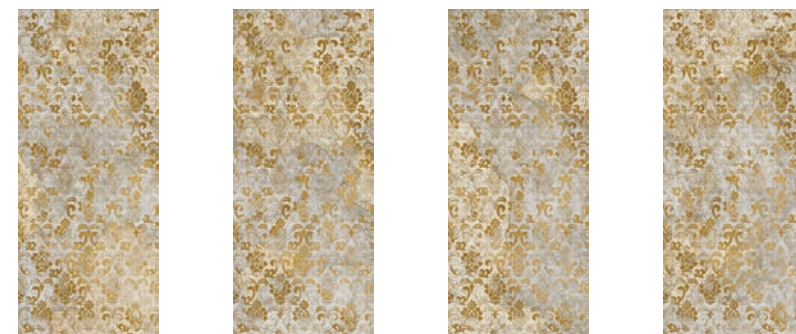
DECORO VENEZIA



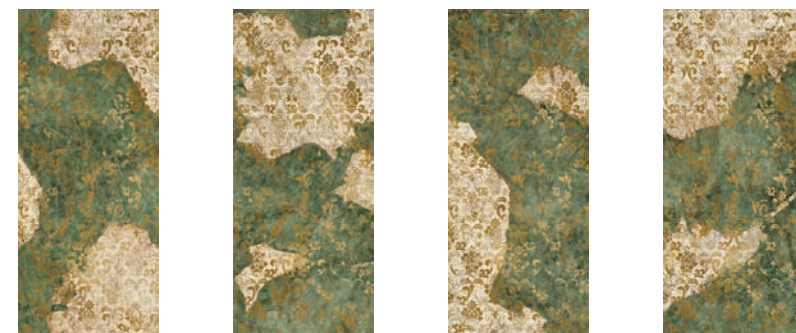
BLACK & WHITE
189024
120x280 . 48"x110" Lap Ret



AVIO
189023
120x280 . 48"x110" Lap Ret



NATURAL
189021
120x280 . 48"x110" Lap Ret



GREEN
189022
120x280 . 48"x110" Lap Ret

WALL

DECORO ESOTICO



BLACK & WHITE
189040
120x280 . 48"x110" Lap Ret



AVIO
189039
120x280 . 48"x110" Lap Ret



NATURAL
189037
120x280 . 48"x110" Lap Ret

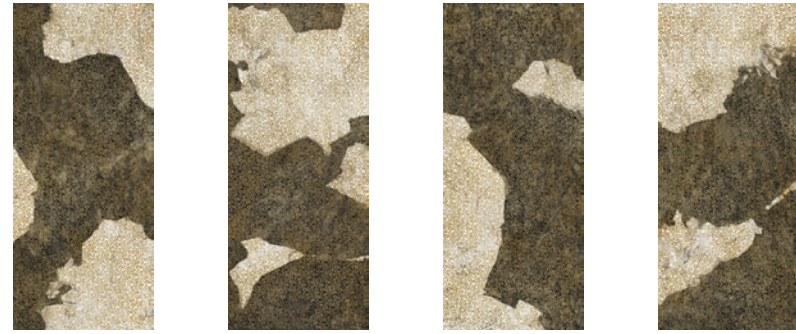


GREEN
189038
120x280 . 48"x110" Lap Ret

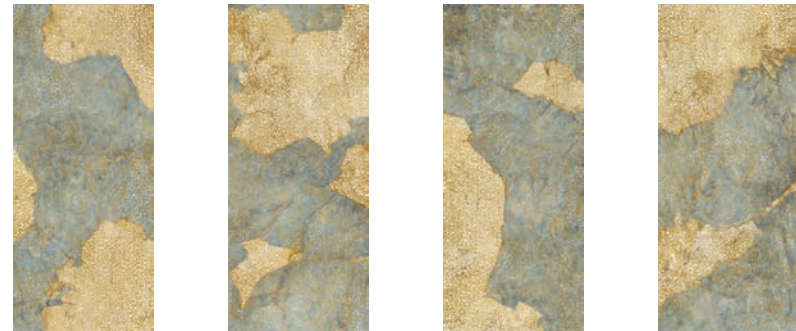
LASTRE IN GRES PORCELLANATO PRESSATE A SECCO - DRY-PRESSED PORCELAIN STONEWARE SLABS
UNI EN 14411-ISO 13006 - APPENDICE G - GRUPPO BIa - UGL

WALL

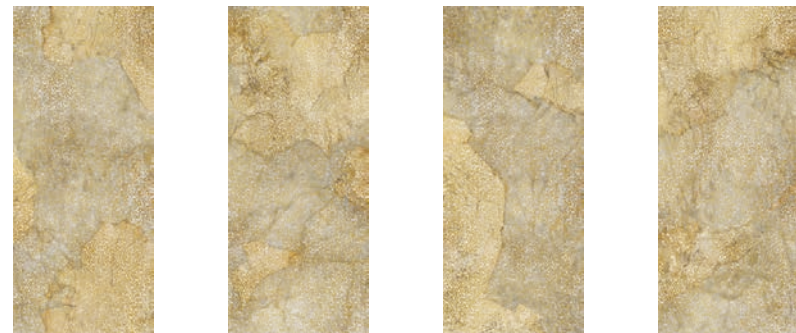
DECORO MONOGRAMMA



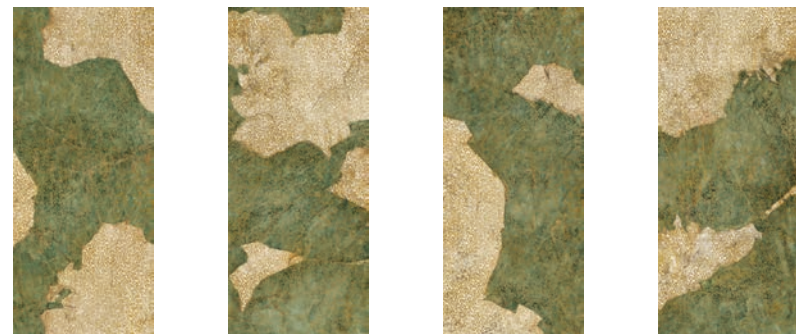
BLACK & WHITE
189028
120x280 . 48"x110" Lap Ret



AVID
189027
120x280 . 48"x110" Lap Ret



NATURAL
189025
120x280 . 48"x110" Lap Ret












GREEN
189026
120x280 . 48"x110" Lap Ret








WALL and BAR COUNTER
MAGMA NATURAL MONOGRAMMA 120X280_48"X110"


COUNTER TOP and BACKSPLASH
MAGMA NATURAL 120X280_48"X110"

	WALL FLOOR	WALL			
	MAGMA	MAGMA LOGO	VENEZIA	ESOTICO	MONOGRAMMA
	 6 mm	 6 mm	 6 mm	 6 mm	 6 mm
	120x280 48"x110" Lap Ret	120x280 48"x110" Lap Ret	120x280 48"x110" Lap Ret	120x280 48"x110" Lap Ret	120x280 48"x110" Lap Ret
BLACK & WHITE 	189004	A 189017 B 189018 C 189019 D 189020	189024	189040	189028
AVIO 	189003	A 189013 B 189014 C 189015 D 189016	189023	189039	189027
NATURAL 	189001	A 189005 B 189006 C 189007 D 189008	189021	189037	189025
GREEN 	189002	A 189009 B 189010 C 189011 D 189012	189022	189038	189026

Eventuali differenze di tono fanno parte del prodotto rientrano nel range di stonizzazione.

Any colour differences are part of the product and fall within the range of hues.













	302x136	330x75
IMBALLO cm h. PACKING cm h.	33,8	193,5
TARA / TARE	108	210
N° x 	20	44
m² x 	3,36	3,36
Kg x 	48,65	48,65
m² x 	67,2	147,84
Kg x 	1.081	2.350


Pallet speciale con sponde
Special pallet with sides


Cavalletto in legno
Wood A-Frame

CARATTERISTICHE TECNICHE TECHNICAL FEATURES

LASTRE IN GRES PORCELLANATO PRESSATE A SECCO . DRY-PRESSED PORCELAIN STONEWARE SLABS
 CLASSIFICAZIONE SECONDO UNI EN 14411-ISO 13006 - G - BIA (E ≤ 0,5%) UGL . PRODUCT IN COMPLIANCE WITH UNI EN 14411-ISO 13006 - G - BIA (E ≤ 0,5%) UGL

Caratteristica Specification	Metodo di prova Test methods	Valore prescritto Fixed value		 LA FABBRICA AVA EXTRAORDINARY TILES
 Caratteristiche dimensionali Dimensions and surface quality	ISO 10545-2	Lunghezza e larghezza length and width	±0.6% or ±2mm	Conforme Compliant
		Spessore thickness	±5%	
		Rettilinearità straightness of sides	±0.5%	
		Ortogonalità rectangularity	±0.5%	
 Assorbimento d'acqua Water absorption	ISO 10545-3		≤ 0,5 %	Conforme Compliant
		 Resistenza alla flessione Breaking modulus	ISO 10545-4	≥ 35 N/mm²
 Sforzo di rottura Modulus of rupture	ISO 10545-4		≥ 7,5 mm = ≥ 1300 N < 7,5 mm = ≥ 700 N	Conforme Compliant
		 Resistenza alla abrasione profonda ANTHRACITE abrasion resistance	ISO 10545-6	≤ 175 mm ³
 Coefficiente di dilatazione termica lineare Thermal expansion coefficient	ISO 10545-8	Metodo disponibile Available on request		≤ 7x10 ⁻⁶ °C ⁻¹
 Resistenza agli sbalzi termici Thermal shock resistance	ISO 10545-9	Metodo disponibile Available on request		Resistenti Resistant
 Resistenza al gelo Frost resistance	ISO 10545-12	Richiesta Always tested		Resistenti Resistant
 Resistenza ai prodotti chimici Chemical resistance	ISO 10545-13	Prodotti chimici ad uso domestico ed additivi per piscina Household chemicals and swimming pool water cleansers	≥ 0,42	Resistenti Resistant
Acidi ed alcali a bassa concentrazione Acids and low concentration alkalis				
 Resistenza alle macchie Stain resistance	ISO 10545-14	Metodo disponibile Available on request		Resistenti Resistant
 Stabilità dei colori alla luce Colour stability to light	DIN 51094	Metodo disponibile Available on request		Conforme Compliant

INFORMAZIONI GENERALI PER LE LASTRE DA RIVESTIMENTO (LOGO, ESOTICO, VENEZIA, FOGLIE, MONOGRAMMA) | WALL

INDICAZIONI GENERALI

Le seguenti lastre della collezione MAGMA: Logo, Esotico, Venezia, Foglie e Monogramma sono destinate esclusivamente al rivestimento di pareti di ambienti interni.

È necessario prestare dunque la massima attenzione durante la movimentazione delle lastre evitando di urtare o strisciare utensili ed oggetti duri e appuntiti sulla loro superficie. Nella fase di sollevamento, tenere separate le lastre con il foglio protettivo per evitare di sfregare le superfici fra di loro.

DECORI CON VETRO E GRANIGLIE

Materiale di pregiata fattura ceramica con caratteristica presenza di craquelé. Le decorazioni mediante l'applicazione artigianale dei vetri e delle graniglie vetrose sulle piastrelle ceramiche possono presentare delle irregolarità nella loro distribuzione in superficie.

Questo non pregiudica l'effetto estetico del prodotto ma anzi ne esalta le caratteristiche.

DECORI CON ORO E LUSTRO

Decorazioni con oro-platino-lustro-metallizzato e graniglia Shine.

La graniglia Shine conferisce una brillantezza zuccherina a basso spessore. I decori realizzati con smalti, contenenti percentuali di oro puro, con il tempo possono perdere la loro brillantezza assumendo una colorazione tipica dell'oro antico.

L'applicazione di pregiati lustri metallizzati donano alla piastrella diversi toni di colore conferendo al prodotto accentuati riflessi madreperlacei ed una maggiore incisività nei colori.

ISTRUZIONI PER LA POSA

Prima di iniziare l'operazione di posa accertarsi che la lastra sia posizionata sul lato corretto e che il disegno sia allineato alla grafica delle lastre adiacenti. Spalmare la colla sulle pareti da rivestire utilizzando una spatola dentata di almeno 6mm.

Dal momento che si trattano di rivestimenti di pareti interne, non è necessaria l'applicazione della colla sul retro della lastra.

Sono idonei alla posa gli adesivi di classe C251. Per un miglior risultato estetico, si consiglia di distanziare le lastre con una fuga da 1mm. Utilizzare, invece, una spatola gommata per battere le lastre al fine di allinearle fra di loro.

Non impiegare stucchi epossidici ma sigillare le fughe solo con stucchi cementizi, proteggendo preventivamente la superficie della piastrella con scotch di carta. Non usare sistemi meccanici livellanti poiché la loro rimozione potrebbe danneggiare la superficie del decoro.

ISTRUZIONI PER PULIZIA

Non utilizzare spugne abrasive ma ripulire immediatamente, con delicatezza, eventuali residui di stucco con un panno utilizzando acqua o detersivi neutri comuni in commercio. Per lo sporco ostinato utilizzare un qualunque detersivo sgrassante purché non sia di alto livello alcalino. Non impiegare nel modo più assoluto alcool, acetone, solventi, candeggina, ammoniaca e prodotti alcalini, acidi di forte intensità o materiali abrasivi.

Non attenendosi a queste norme, l'azienda non risponderà per eventuali danni arrecati al prodotto in fase di contestazione.

DESTINATION USE AND MAINTENANCE INSTRUCTIONS FOR WALL TILE SLABS (LOGO, ESOTICO, VENEZIA, FOGLIE, MONOGRAMMA SLABS) | WALL

GENERAL INDICATIONS

The following Slabs from the MAGMA collection: Logo, Esotico, Venezia, Foglie e Monogramma are intended exclusively for indoor wall tiling. The decorations of this product are poorly scratch resistant.

Therefore, care must be taken when handling the slabs to avoid impacting or dragging tools and hard, sharp objects on their surface. While lifting, keep the slabs separated with the protective sheet to avoid rubbing the surfaces together.

DECORATIONS WITH GLASS AND GRITS

High-quality handicraft ceramic material, featured by the crazing effect. Decorations by the artisanal application of glass and vitreous grit on ceramic tiles may feature irregularities in their surface distribution. This does not affect the aspect of the product, rather enhances its characteristics.

DECORATIONS WITH GOLD AND LUSTRE

Decorations with gold-platinum-lustre-metallic and Shine grit. Shine grit gives a low-thickness shiny white gloss.

Decorations made with glazes featured by small percentage of pure gold can lose brilliancy in time, getting the peculiar colour of old gold. The application of precious metallic lustres gives the tile different colour shades, for a product with bright mother-of-pearl reflections and greater colour incisiveness.

INSTALLATION INSTRUCTIONS

Before starting installation, make sure that the slab is positioned on the correct side and that the pattern is aligned with the graphics of the adjacent slabs. Spread the adhesive on the walls to be tiled using a notched trowel of at least 6 mm. As an interior wall coating, no slab back buttering is needed. Class C251 adhesives are suitable for installation.

For a better aesthetic result, we recommend spacing the slabs with a 1-mm joint. Instead, use a rubber trowel to beat the slabs to align them reciprocally. Do not use epoxy grouts, rather seal joints with cementitious grouts only, protecting the tile surface beforehand with a paper masking tape. Do not use mechanical levelling systems as their removal may damage the surface of the decoration.

CLEANING INSTRUCTIONS

Do not use abrasive sponges, rather immediately and gently wipe away any grout residue with a cloth using water or commercially available neutral detergents. For stubborn dirt, use any degreasing detergent as long as it is not highly alkaline.

Never use alcohol, acetone, solvents, bleach, ammonia and alkaline products, strong acids or abrasive materials.

Should these rules not be followed, our company is not liable for any damage caused to the product claimed.

MAGMA SERIES CATALOGUE
under licence of Tonino Lamborghini SpA

AD: Marketing La Fabbrica
Print: Officine Grafiche Staged s.r.l.
1st Edition - February 2023

Certificazioni di prodotto
Product certification. Certification de produit. Produkt Zertifizierungen.



Certificazione obbligatoria per l'esportazione in Cina.
Certification mandatory for export to China.
Certification obligatoire pour l'exportation en Chine.
Für den Export nach China obligatorische Zertifizierung.

